

Minutes: Minutes of the 26th Meeting of the Maules Creek Coal Community Consultative Committee
Held at the Boggabri Golf Club, Gunnedah Road, Boggabri NSW 2382

Wednesday 15 August 2019

Members Present: Alex Williams (AW) – WHC, Cr Robert Kneale (RK) – Narrabri Shire Council, Darren Swain (DS) – WHC, David Paull (DP) – Sustainable Living Armidale (SLA), Emma Bulkeley (EB) – WHC, Jack Warnock (JW) – Community Representative, Libby Laird (LL) – Maules Creek Community Representative, Lyndell Crowley (LC) – Boggabri Business & Community Progress Association, Robyn Grover (RG) – Community Representative (Alternate), Steve Eather (SE) – Community Representative.

Apologies: Nigel Wood (NW) – WHC, Ross Wilson (RW) – WHC, Simmone Moodie (SMo) – Community Aboriginal Representative

Guest: Ros Druce (RD)

Observers: N / A

Independent Chair: David Ross (DR)

Independent Secretary: Debbie Corlet (DC)

Agenda Items	Who to Present
1. Apologies	DR
2. Declaration of pecuniary or other interests	DR
3. Confirmation and Discussion of the minutes of the previous meetings – 15 May 2019	DR
4. Business arising from the previous minutes – Action List Distributed	DR
5. Correspondence	ALL
6. Questions and Answers Session	ALL
7. Company Reports and Overview of Activities: <ul style="list-style-type: none">a. Progress at the mineb. Monitoring and environmental performancec. Community complaints and response to complaintsd. Information provided to the community and any feedback	
8. General Business <ul style="list-style-type: none">a. Leards Forest Environmental Trust	ALL
9. Next Meeting – 30 October 2019	ALL

Agenda Item	Discussion	Action/By Whom
1.	<p>Welcome and Apologies – Nigel Wood, Ross Wilson and Simone Moodie.</p> <p>DR welcomed David Paull, Alex Williams (from WHC Environment) and Lyndell Crowley to the CCC and advised that Ros Druce will be joining the meeting towards the end as a guest to discuss the Leards Forest Environmental Trust and its discussions with Narrabri Shire Council.</p> <p>DR also advised that Cath Collyer – Community Representative has also resigned due to work commitments.</p>	
2.	Declaration of pecuniary or other interests – DR advised he is paid a fee to chair these meetings as is DC for typing the Minutes. RG has a daughter at Maules Creek and a grandson at Boggabri Coal. SE has a son at Boggabri Coal.	
3.	Confirmation of the minutes of the previous meeting (May 2019) – The CCC endorsed the minutes as an acceptable record of what was discussed.	
4.	<p>Business arising from the previous minutes – DR observed all actions from previous meeting completed.</p> <p>There were 2 actions on WHC: one on sponsorships and one on the reporting of regional dust events to DPE – Darren has provided information regarding 12 and 31 March and 8 April 2019. Both completed.</p> <p>DR mentioned he attended the Namoi Regional Air Quality meeting which is organised by the EPA yesterday (Tuesday 13 August 2019) and confirmed that the EPA had identified a number of these events as being regional dust storms.</p>	ACTION 1 – DR to email Autumn 2019 report to all
5.	Correspondence – No correspondence received by DR.	
6.	<p>WHC Presentation by Darren Swain – DS – Advised that the next meeting could be held at the Maules Creek Coal Mine and could include a tour.</p> <p>Company Report & Overview of Activities</p> <ul style="list-style-type: none"> • June 2019 quarter production figure 1.67Mt. FY19 production 11.7Mtpa ROM (Run of Mine) coal. • Continued focus to improve safety, which is reflected in safety records. <p>Health, Safety, Drug and Alcohol Programs</p> <ul style="list-style-type: none"> • Employee health and safety programs continued to focus on: Injury Prevention, Fatigue Management, Annual Skin Checks, Ongoing Mental Health Awareness and Training on First Aid, Incident Investigation, Emergency Response Team, to name a few. • Ongoing Employee Drug and Alcohol testing carried out. <p>Employment</p> <ul style="list-style-type: none"> • Continued focus on local, indigenous and female employment with ongoing training programs undertaken. 	

- There have been 21 new trainees employed from April to June 2019. 2 of these are new Indigenous trainees.

Air Quality Management

- Annual rolling average for TEOM 1 is 18.5 ug/m³ at 30 June 2019 (criteria 30ug/m³).
- Ongoing dust suppressant application across the operation. Progressive overburden emplacement and bulk shaping on the northern dump. With some topsoil spreading starting to be carried out – 10ha.
- MCC air emissions are lower (over 30%) than those modelled in the Environmental Assessment.

Biodiversity Management

- During the most recent routine Whitehaven Offset Area Feral Animal Control program (April to June 2019) the results included:
 - 29 out of total 41 pigs trapped were from the Maules Creek / Boggabri area; and
 - 59 out of total 134 foxes baited were from the Maules Creek / Boggabri area (14% bait take rate).
- Broadleaf weed control of Revegetation areas: seasonal Box Thorn spraying and Tiger Pear manual removal (Southern Offsets) has been undertaken otherwise resources have been utilised for tree watering.
- Peak Revegetation Period during Autumn through Spring for Maules Offsets targeting:
 - 44ha to be seeded with Native Woodland Understorey species mix. 1054ha to be planted with Native Woodland Overstorey species.
 - Maules Offsets burns were completed during May 2019 on Olivedene and Bimbooria. Whitehaven Maules Wirradale Offset Ecological Burn 2018 was a Finalist for the NSW Mining Environmental Excellence Awards.
- Upcoming Works:
 - Revegetation Program (Tree Planting) ongoing to finish by September 2019.
 - Feral Animal Control in August / September 2019. Weed Spraying / Tree Watering ongoing.
 - Commence annual Fire Break Track Maintenance Program.
 - Demolition of remaining derelict/ obsolete above ground structures ongoing.
 - Annual Flora and Fauna Monitoring from September to November 2019.

Groundwater Monitoring

- Slides presented on groundwater locations and standing water levels.

Water Management

- Current Project Approvals for each of the BTM sites envisage the potential need for mines to share water/ transfer water between sites. The BTM Water Management Strategy reflects this potential requirement.
- These safeguards ensure that, during prolonged dry spells or periods of drought, security of supply is maintained and therefore hundreds of jobs continue. Appropriate water licences are held to accommodate volumes being shared and the process of water trading is overseen by WaterNSW.

High Security Water

- 3,000 Unit High Security (HS) Water Licence held by MCC. HS water licenses in total held by entities such as sporting clubs, mining companies, construction companies, landholders and Government entities.

Autonomous Haulage

- Phased introduction of AHS pending evaluation over the next few years.
- Supporting employees in affected roles to transition into jobs operating the new technology or be redeployed to Whitehaven's other local mines. AHS will create new and highly skilled jobs at Maules Creek.
- Using three trucks we have now performed many cycles and moved over 10,000 tonnes of overburden.
- No work on autonomous drill rigs or excavators being undertaken.

Community

- Supporting the Future EDU program in Narrabri Shire in promotion of STEM. Whitehaven are advertising for 2020 Graduate Program.

Sponsorships and Donations Criteria

- WHC regularly considers requests for donations, sponsorship and gifts in kind, which provide benefit in the following areas: Health, Education, Whole of Community, Representative Level Indigenous Sport.
- Check – <http://www.whitehavencoal.com.au/donations-and-sponsorship/>

Voluntary Planning Agreement (VPA) Payments and Local Spend

- MCCM were required to negotiate a VPA with Narrabri Shire Council (NSC) as per Project Approval. Completed in 2014. Contributions have been paid to Narrabri Shire Council of:
 - **\$13,425,000** paid in lump sum contributions plus ongoing monthly payments of \$0.075 per saleable coal tonne + CPI – ongoing. (**FY19 almost \$700,000** allocated).
 - Sponsorships and donations distributed to Narrabri Shire Council include - \$6M for upgrades of Therribri Road and Tarriaro Bridge. Some of these funds were used for the Baan Baa water supply. \$5M upgrades to Narrabri Airport. \$800,000 for various projects within Boggabri and surrounds. \$275,000 for Maules Creek community. \$1,250,000 for CBD upgrades in Narrabri Shire. \$100,000 for Environmental Projects.
- Whitehaven has spent \$1.5 billion in the North West NSW economy since 2013.

General Discussion re the WHC Presentation

It was noted that an external sales rep died on site (on the day of our last CCC). There is an investigation still ongoing.

A discussion then occurred regarding the bus that transports staff to the mine from Gunnedah with a query from LL as to whether the buses appear to be empty. In response, it was noted that staff must use the bus unless they are from Maules Creek or Manilla. The last quarterly audit shows 93% of required employees are using the bus.

JW asked about what the mine is doing with the topsoil? EB noted that the topsoil on the contour banks has been ripped to slow the water with coconut matting used to help with erosion. Topsoil is then placed back as part of the mine's MOP (Mine Operations Procedure) – currently 300mm in total (150mm subsoil and 150mm topsoil).

LL asked what self-reporting was undertaken 6 to 10 January 2019 regarding air quality?

<p>EB – In January there were no exceedances? The monitor is near the Maules Creek School. We haven't been contacted by the EPA. There was another regional event on 8 August 2019 – our mine shut down from 11 am to 5 pm. The EPA were onsite, but it was our decision to shut the mine down and report that.</p> <p>LL – Which project approval does the transfer of water from Boggabri Coal to MC Coal come under? I asked this question at the Joint CCC last time and did anyone get back to you David? I know it is not this meeting, but..</p> <p>LL – I don't understand it. I asked Stephen O'Donoghue and he told me in an email that the transfer of water entitlement to the Boggabri bores can be undertaken through dealings under the <i>Water Management Act 2000</i>.</p> <p>He said it does not require separate planning approval and that it is undertaken through approvals issued by WaterNSW and/or NRAR.</p> <p>He said basically that the transfer of water from Boggabri to Maules Creek can be undertaken via the complying development provisions under the State Environmental Planning Policy called the Mining, Petroleum Production and Extractive Industries 2007 - Mining SEPP.</p> <p>Also, he said that certain activities associated with an approved mine can be undertaken as complying development, including the construction, maintenance and use of water pipelines.</p> <p>DP asked about how much planting had been done, the watering regime and work on offsets. Was taken on notice. DP also asked about Wirradale observing that it was his understanding that it was going to go to OEH but has been retained by WHC?</p> <p>DS – Hasn't happened yet. We have an extension, I believe. Will take on notice whether the property will be associated with a conservation trust.</p> <p>JW requested that some slides made available to members also be included in the monitoring report.</p> <p>EB – Over 12 months – they look so much sharper.</p> <p>A discussion was held clarifying progress of the BTM Water Management Strategy. EB noted that the Strategy was signed off in May and is now finalised. It is on the Maules Creek webpages (whitehavencoal.com.au > Operations > Maules Creek Mine > Environmental Management > Strategy > BTM Complex Water Management Strategy).</p> <p>JW – Interested in strategy and whether WHC will be acquiring additional licences and acquisition period.</p> <p>DS – I don't know Jack right now. I think we'll still be looking for licences either temporarily or permanent.</p> <p>DS – Our Project Approval contemplates us sharing water between mines. This pipeline is approved via a Complying Development Certificate which is not regulated by DPE. It is approved by the Mining SEPP and the Water Management</p>	<p>ACTION 2 – WHC to find out about how much planting has been done, the watering regime and what works are being undertaken currently at offsets.</p> <p>ACTION 3 – DS to chase up the plan associated with the slides.</p> <p>ACTION 4 – Include appropriate GW monitoring graph in the report.</p>
--	---

	<p>Act. Water is extracted under the Water Management Act with appropriate water allocation transferred to enable Boggabri Coal to extract that water. It goes to Boggabri and then comes to MCC. Boggabri Coal MOD5 also approves the Boggabri Coal portion.</p> <p>DS – Not a Project Approval – it is separate.</p> <p>LC – Regarding the Autonomous Haulage – will this impact where you’ll fill these positions?</p> <p>DS – We will advertise, and these people will be trained up. The idea is to re-deploy and upskill these people. The trial is just with dump trucks, but we’ll still need some truck drivers.</p> <p>A discussion was then held clarifying where the VPA money is being spent. DS clarified that he was not aware that MCCM was committed to buying the hospital an ultrasound unit, only that a request had been sent out recently by the Chairman of the Business Chamber. VPA money had also been used for the airport and CBD upgrades.</p>	
7.	<p>General Business – Roz Druce was invited into the meeting room</p> <p>RD lead a lengthy discussion to update the CCC on the work that the Leards Forest Environmental Trust undertakes and the negotiations it is having at present with NSC with respect to who should make decisions on approving funding for grants. It was noted that the Trust members had taken great effort to put in place clear criteria for acceptable projects – such as environmental improvement projects must take place within a 25 km radius of the Leard State Forest Precinct. Indeed, some applications have been knocked back by the Trust through the years for not meeting the criteria. Historically, the Trust would request that NSC release funds for successful projects as NSC had administered the funds; that way, the monies were at “arm’s length” from the Trust to add to the other checks and balances that the Trust had put in place to maintain its integrity and good governance. Well over \$200,000 remains in the account.</p> <p>NSC had identified in 2017 that they would not fulfil their obligations under the Local Government Act if the approach previously agreed to between the Trust and NSC (with respect to the Trust making decisions) were to continue. Instead, the General Manager had determined that, as of the beginning of this year, any applications deemed to be successful by the Trust would still need to be run past the NSC Councillors for approval. Some Trust members believed that this was open to interpretation and should the historical approach change, MCCM would not comply with the VPA it had with NSC as part of its project approvals. These negotiations with NSC have been very frustrating for some members of the Trust who may end up resigning.</p> <p>The discussion ended with CCC members advising that they believed legal advice was required.</p> <p>DR thanked Roz sincerely for all her hard work.</p>	<p>ACTION 5 – DR to write to NSC seeking advice on legalities and then seek legal advice on this and Maules Creek VPA</p>

	<p>DP asked WHC about weather control systems – do you have one and spontaneous combustion? A discussion was held on this trying to clarify what the issue was. It was noted that spontaneous combustion is where some coals (SE – and hay) when exposed to oxygen, heat up and may combust. MCCM has an automated system that fires water onto the stockpiles and keeps dust down and also keeps them cool if required. DP was invited to provide further information at any time to clarify the issue.</p> <p>DR gave a brief update on the Namoi Region Air Quality Advisory Committee — March was the dustiest since 2005 within the region and groundcover was at its lowest since 2001. At the next meeting, it is expected that the dust storm that occurred on 8th August will be discussed.</p> <p>Members were then given a briefing note from WHC responding to pre-meeting questions and the 2018 Annual Review.</p>	ACTION 6 – Weather control systems
8.	<p>Next meeting date to be agreed - Next meeting Wednesday 30 October 2019 at 2:00pm.</p> <p>SE – Advised that he won't be attending the next meeting – DR to find an alternative. EPA will attend the Joint CCC and present about regulation and air quality.</p>	

Meeting Closed: 4:35 pm

Appendix 1: Actions

Page No	Action No	Description	Date Raised
2	1	DR to email Autumn 2019 report to all.	14 Aug 19
5	2	WHC to find out about how much planting has been done, the watering regime and what works are being undertaken currently at offsets.	14 Aug 19
5	3	DS to chase up the plan associated with the slides.	14 Aug 19
5	4	Include Groundwater SWL Comparison graph in the monitoring report.	14 Aug 19
6	5	DR to write to NSC seeking advice on legalities and then seek legal advice on this and Maules Creek VPA.	14 Aug 19
7	6	Weather control systems	14 Aug 19

Maules Creek Coal Mine Community Consultative Committee Meeting #26

Environmental Monitoring Report For the Q2 period, April - June 2019

Attended Noise Monitoring

Attended noise monitoring was undertaken at six locations during April, May and June 2019 by an independent acoustic consultant. The measured noise level (LAeq 15 minute) attributed to Maules Creek Coal Mine (MCCM) and applicable criteria for each location are shown in the tables below.

LAeq, 15minute GENERATED BY MCCM AGAINST OPERATIONAL NIGHT NOISE CRITERIA – APRIL TO JUNE 2019.

Table 1 - April Noise Monitoring

Location	Start Date and Time	Wind Speed m/s	Rainfall mm	Criterion dB	Criterion Applies ¹	MCCP LAeq dB ²	Exceedance dB ³
NM1	16/04/2019 22:26	2.6	0	35	Yes	IA	Nil
NM2	16/04/2019 23:15	1.8	0	39	Yes	<30	Nil
NM3	16/04/2019 23:48	2.4	0	35	Yes	<20	Nil
NM4	16/04/2019 22:51	2.3	0	35	Yes	IA	Nil
NM5	16/04/2019 22:00	2.8	0	35	Yes	IA	Nil
NM6	16/04/2019 23:33	1.8	0	35	Yes	<20	Nil

Table 2 - May Noise Monitoring

Location	Start Date and Time	Wind Speed m/s	Rainfall mm	Criterion dB	Criterion Applies ¹	MCCP LAeq dB ²	Exceedance dB ³
NM1	02/05/2019 22:30	0.6	0.0	35	Yes	IA	Nil
NM2	02/05/2019 23:20	0.7	0.0	39	Yes	NM	Nil
NM3	02/05/2019 23:39	0.6	0.0	35	Yes	IA	Nil
NM4	02/05/2019 22:56	0.5	0.0	35	Yes	IA	Nil
NM5	02/05/2019 22:00	0.7	0.0	35	Yes	IA	Nil
NM6	02/05/2019 23:48	0.6	0.0	35	Yes	IA	Nil

Table 3 - June Noise Monitoring

Location	Start Date and Time	Wind Speed m/s	Rainfall mm	Criterion dB	Criterion Applies ¹	MCCP LAeq dB ²	Exceedance dB ³
NM1	05/06/2019 22:30	0.5	0.0	35	Yes	30	Nil
NM2	05/06/2019 23:30	0.4	0.0	39	Yes	34	Nil
NM3	05/06/2019 23:42	0.5	0.0	35	Yes	29	Nil
NM4	05/06/2019 23:00	0.3	0.0	35	Yes	33 ⁴	Nil
NM5	05/06/2019 22:00	0.7	0.0	35	Yes	<25	Nil
NM6	06/06/2019 00:00	0.6	0.0	35	Yes	<25	Nil

(1). Noise emission limits do not apply during periods of rainfall or winds greater than 3 metres per second (at a height of 10 metres);

(2). Estimated or measured LAeq,15minute attributed to MCCM;

(3). NA in exceedance column means criterion is not applicable, either due to atmospheric conditions outside those specified in project approval or due to property acquisition by MCC; and

(4). Indicates the application of a 2dB low frequency modifying factor.

IA/NM – Inaudible NM – Not measurable

During Q2 one measurement satisfied the conditions for further assessment when reviewed for the applicability of low frequency modification factors in accordance with the EPA's Noise Policy for Industry. The measurement was assessed against the low frequency modification factors in accordance with the EPA's Noise Policy for Industry, and was determined to have remained compliant.

The Maules Creek Coal (MCC) EPL 20221 also has a '1 Minute - Night' criteria (LA1) that applies from 10pm to 7am Monday to Saturday & 10pm to 8am Sundays and Public Holidays. The results for the LA1 monitoring are shown below. The results show that mine operations did not exceed the applicable LA1 criteria during attended noise monitoring in Q2 2019.

LA1, 1minute GENERATED BY MCC AGAINST OPERATIONAL NIGHT NOISE CRITERIA – April TO June 2019.

Table 4 - April Noise Monitoring – Night

Location	Start Date and Time	Wind Speed m/s	Rainfall mm	Criterion dB	Criterion Applies ¹	MCCP LA1,1min dB ²	Exceedance dB ³
NM1	16/04/2019 22:26	2.6	0	45	Yes	IA	Nil
NM2	16/04/2019 23:15	1.8	0	45	Yes	37	Nil
NM3	16/04/2019 23:48	2.4	0	45	Yes	<20	Nil
NM4	16/04/2019 22:51	2.3	0	45	Yes	IA	Nil
NM5	16/04/2019 22:00	2.8	0	45	Yes	IA	Nil
NM6	16/04/2019 23:33	1.8	0	45	Yes	<20	Nil

Table 5 – May Noise Monitoring – Night

Location	Start Date and Time	Wind Speed m/s	Rainfall mm	Criterion dB	Criterion Applies ¹	MCCP LA1,1min dB ²	Exceedance dB ³
NM1	06/02/2019 22:30	4.0	0	45	No	IA	NA
NM2	06/02/2019 23:00	4.3	0	45	No	<30	NA
NM3	07/02/2019 00:00	5.2	0	45	No	IA	NA
NM4	06/02/2019 23:30	4.6	0	45	No	IA	NA
NM5	06/02/2019 22:00	5.0	0	45	No	IA	NA
NM6	07/02/2019 00:00	5.2	0	45	No	IA	NA

Table 6 - June Noise Monitoring – Night

Location	Start Date and Time	Wind Speed m/s	Rainfall mm	Criterion dB	Criterion Applies ¹	MCCP LA1,1min dB ²	Exceedance dB ³
NM1	05/06/2019 22:30	0.5	0.0	45	Yes	35	Nil
NM2	05/06/2019 23:30	0.4	0.0	45	Yes	40	Nil
NM3	05/06/2019 23:42	0.5	0.0	45	Yes	35	Nil
NM4	05/06/2019 23:00	0.3	0.0	45	Yes	40	Nil
NM5	05/06/2019 22:00	0.7	0.0	45	Yes	<25	Nil
NM6	06/06/2019 00:00	0.6	0.0	45	Yes	<25	Nil

Notes:

- Noise emission limits do not apply during periods of rainfall or wind speeds greater than 3 metres per second (at 10 metres);
 - Estimated or measured LAeq,15minute attributed to MCCM;
 - Estimated or measured LA1,1minute attributed to MCCM;
 - NA in exceedance column means atmospheric conditions outside those specified in Project Approval and criterion is not applicable.
- IA – Inaudible NM – Not measurable

Wind Direction during Attended Monitoring

Wind direction data is collected from the MCCM Automated Weather Station (AWS). Wind data for the duration of the attended monitoring assessment, recorded at the MCCM AWS is presented in the table below.

Table 7 - Prevailing Wind Direction

Monitoring Date	Prevailing Wind Direction
April	SE
May	SW/SE
June	SE

Blast Monitoring

There have been 31 blasts at MCCM during Q2 2019. All blast monitoring results recorded within the reporting period have been within the applicable overpressure and ground vibration limits specified in the respective approvals.

Table 8 - Blast Results Summary Quarter 2 2019

Parameter	Units	Frequency	Number	Average	Max	100% Limit	Exceedance (Yes / No)
Noise	dB (Lin Peak)	All	31	91.9	108.4	120	No
Vibration	mm/s		31	0.21	1.39	10	No

Air Quality

Total Depositional Dust

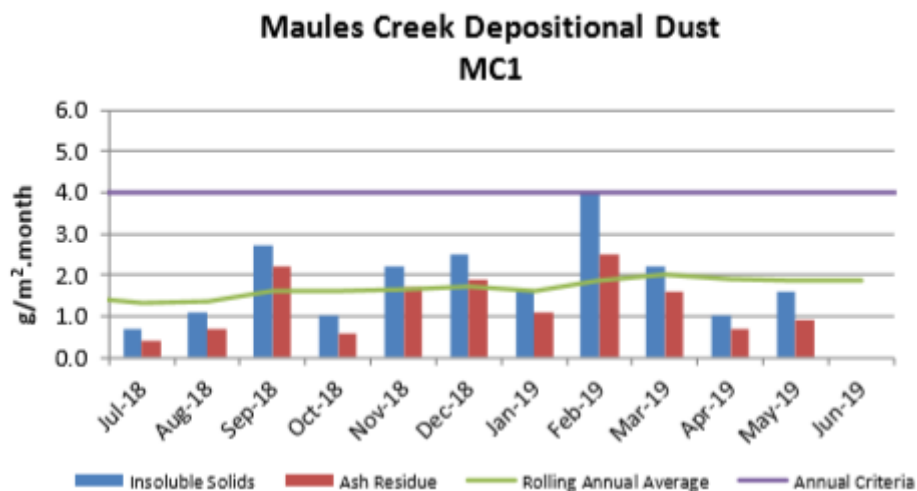
The monthly rolling annual average remains below the relevant Project Approval criteria of 4gm/m²/month for the respective monitoring points, as shown on the graphs below. Depositional dust levels at MC1 and MC2 were elevated during June however this is attributed to sample contamination.

Table 9 – Deposited Dust Gauge Results [g/m²/month]

MONTH	MC1	MC2	MC3	MC4
April - 19	1.0	3.7	3.9	3.9
May-19	1.6	1.6	2.4	1.3
June-19	9.0*	5.8*	2.7	0.9
12 MONTH ROLLING AVERAGE	1.9	2.5	3.1	2.2

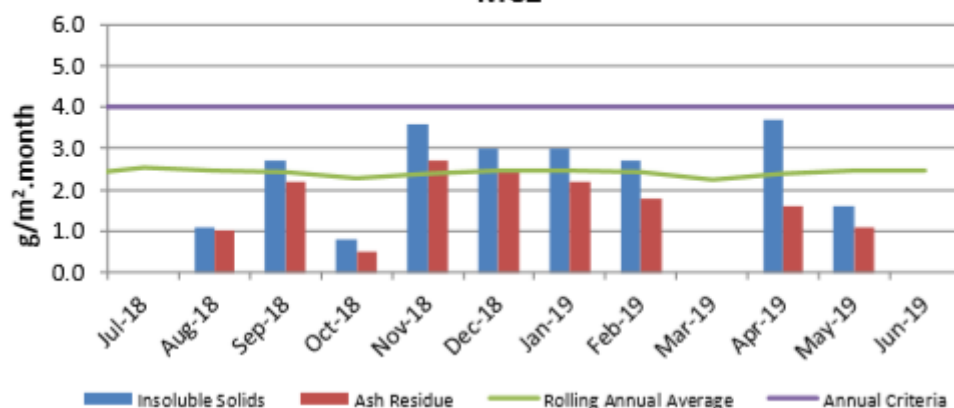
* indicate an excessively contaminated gauge and are not included in the project average. Contamination can include bird droppings, vegetation (such as plant matter, algae, pollen, seeds), and insects.

Deposited Dust Monitoring Figures (MC1 – MC4)



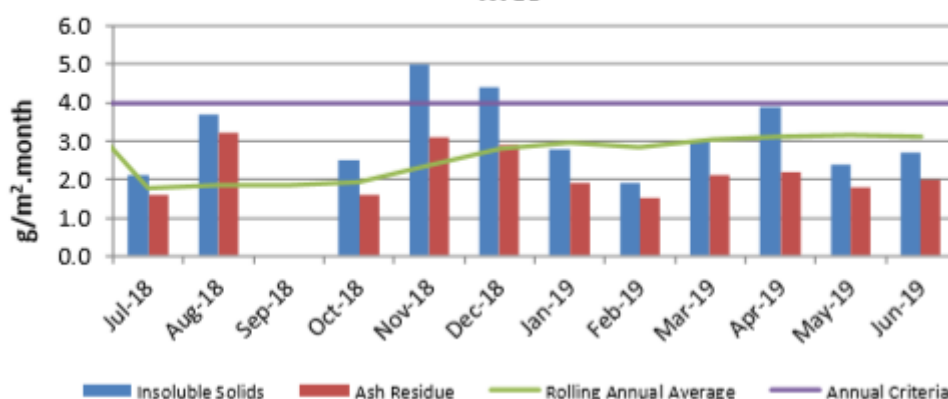
* Blank cells indicate sample periods where the sample has been contaminated and excluded from the results tables due to contaminated material (insect larvae, bird droppings, vegetation etc.).

Maules Creek Depositional Dust MC2



* Blank cells indicate sample periods where the sample has been contaminated and excluded from the results tables due to contaminated material (insect larvae, bird droppings, vegetation etc.).

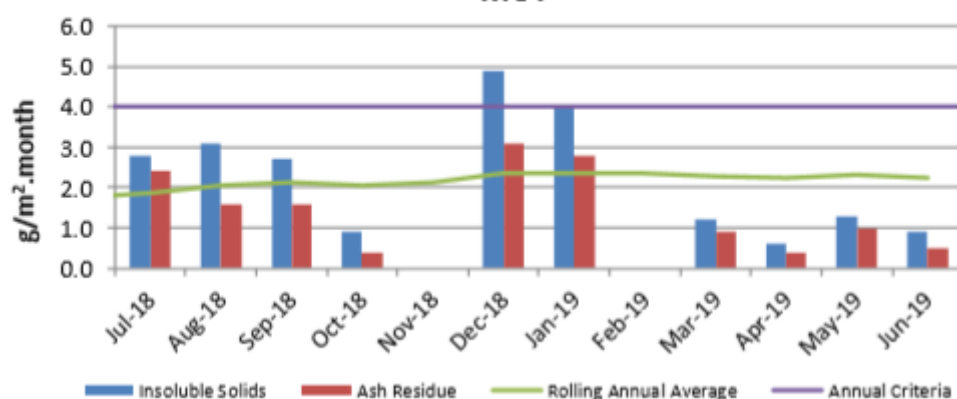
Maules Creek Depositional Dust MC3



* Blank cells indicate sample periods where the sample has been contaminated and excluded from the results tables due to contaminated material (insect larvae, bird droppings, vegetation etc.).

** Exceedances recorded in November and December were attributed to the regional events and discussed at the February 2019 CCC meeting

Maules Creek Depositional Dust MC4



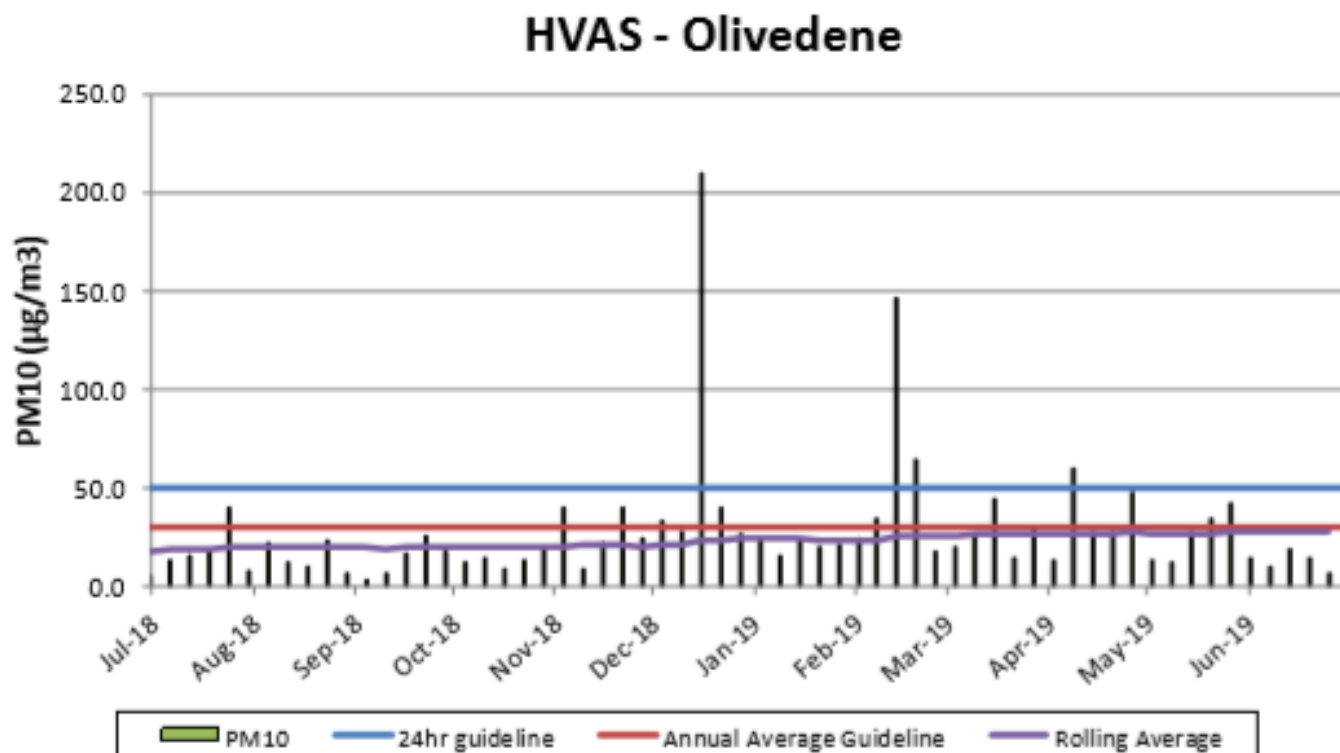
* Blank cells indicate sample periods where the sample has been contaminated and excluded from the results tables due to contaminated material (insect larvae, bird droppings, vegetation etc.).

** Exceedances recorded in December were attributed to the regional events and discussed at the February 2019 CCC meeting

High Volume Air Sampling (HVAS)

The HVAS monitor is located on the property 'Olivedene,' a mine owned property on Therribri Road.

HVAS PM₁₀ Rolling Annual Average during Q2 2019 remained below the Annual Average Guideline 30 µg/m³. An elevated result was recorded on 8th April 2019, which was attributed to regional weather conditions.

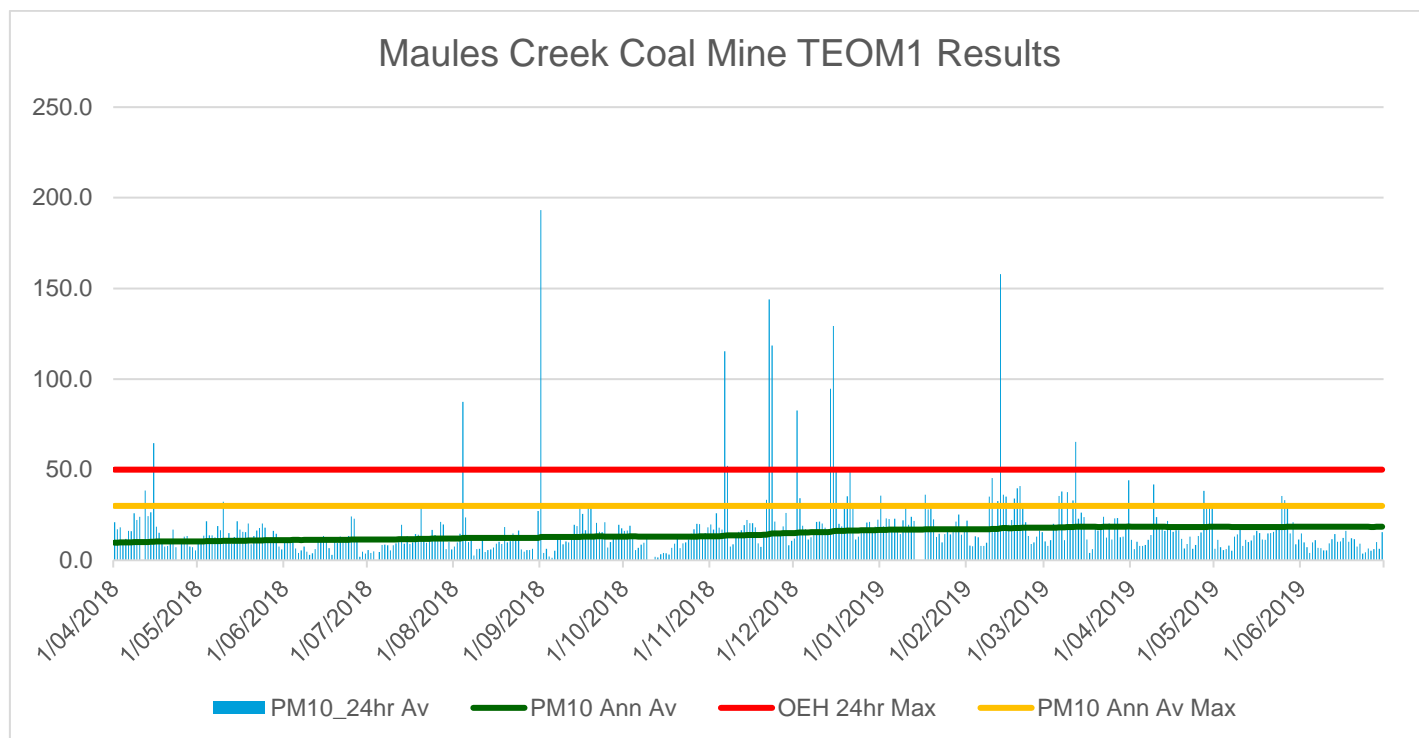


* Exceedances recorded in December, February and April were attributed to the regional events and discussed at the February and May 2019 CCC meetings

TEOM - PM₁₀ Results

The annual average for PM₁₀ results at the Maules Creek Coal TEOM remain below the Project Approval annual average criteria of 30µg/m³ (at 30 June 2019) as shown in the following figure. The PM₁₀ annual average results have remained below this criteria since the TEOM was commissioned in November 2011. There have been no exceedances of the 24 hour average for Q2.

TEOM Result Figures – Particulate Matter PM₁₀µg/m³ and PM_{2.5}µg/m³



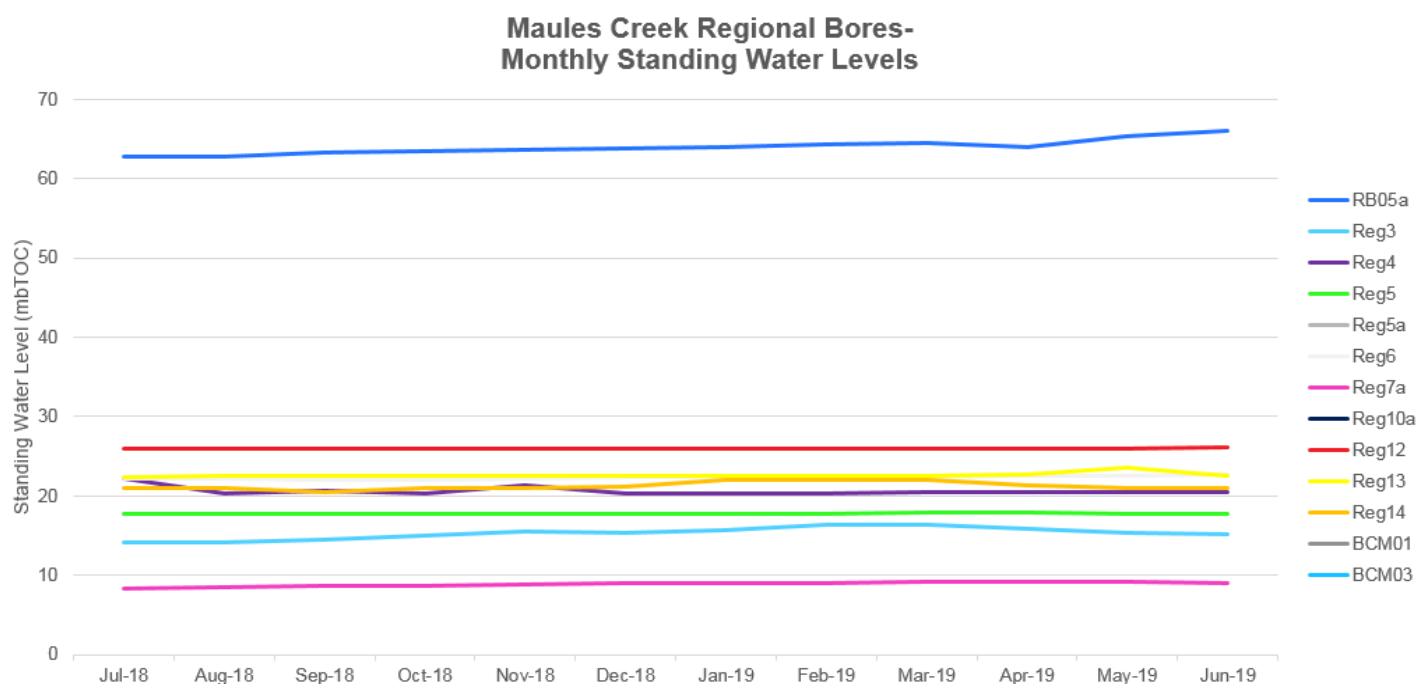
* Blank columns indicate sample periods where there was either power outage, maintenance or other related causes.

** Exceedances of the OEH 24hr Maximum over the past 12 months have been non mine related and have been attributed to regional dust events, all previous exceedances have been discussed at CCC meetings.

Water Monitoring

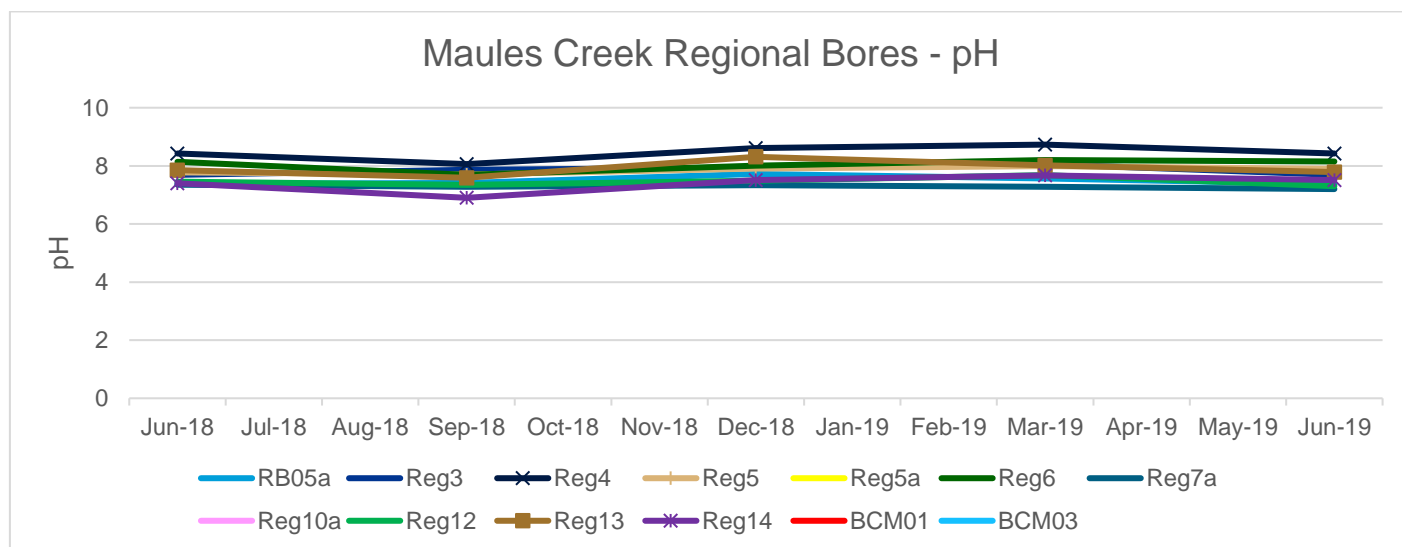
Groundwater

Groundwater monitoring results in open standpipe piezometers show levels to be relatively stable. The Regional bores were installed between Q4, 2013 and Q1, 2014. BCM01, BCM03, Reg10 are shallow bores which have remained dry since construction in 2013.



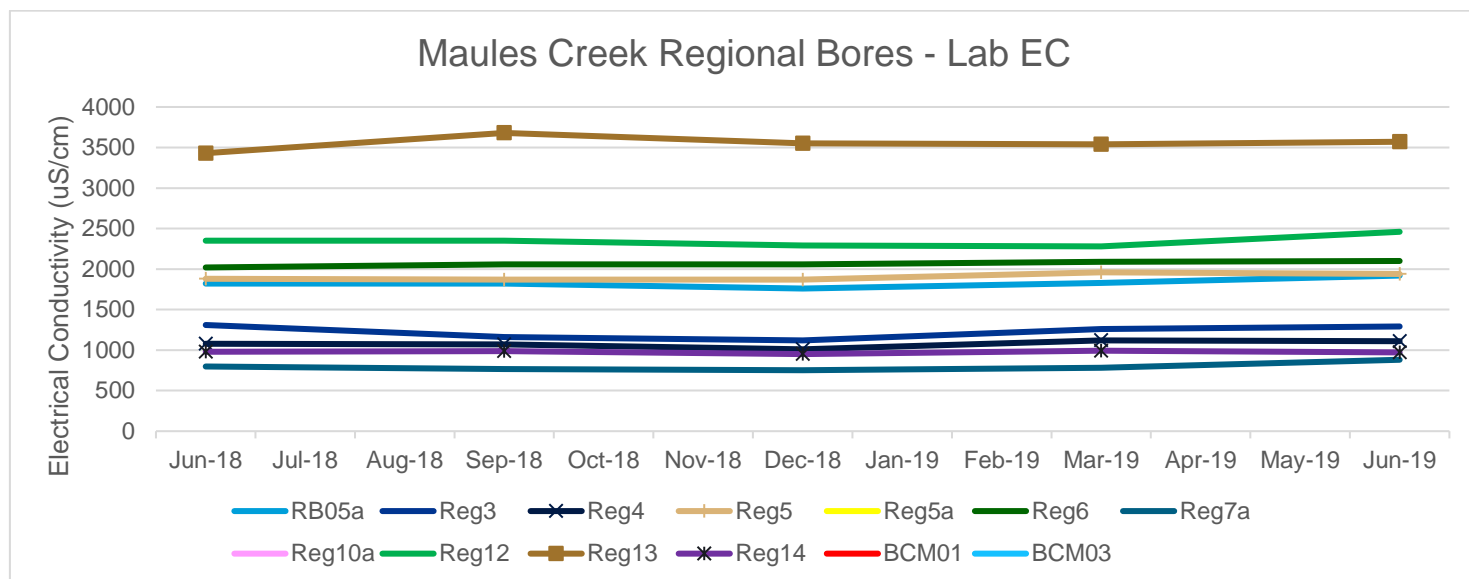
Acidity / Alkalinity (pH)

Over the past twelve months pH readings across the regional bores have remained static with very little fluctuation.



Electrical Conductivity

Laboratory Electrical Conductivity (EC) levels are all within historic groundwater EC range of 500 μ S/cm to 2,500 μ S/cm, with the exception of monitoring bore Reg13 which has a historic groundwater EC range of 2,500 μ S/cm to 4,100 μ S/cm. Within the last twelve months EC has remained static.



Wet Weather Discharge Sampling

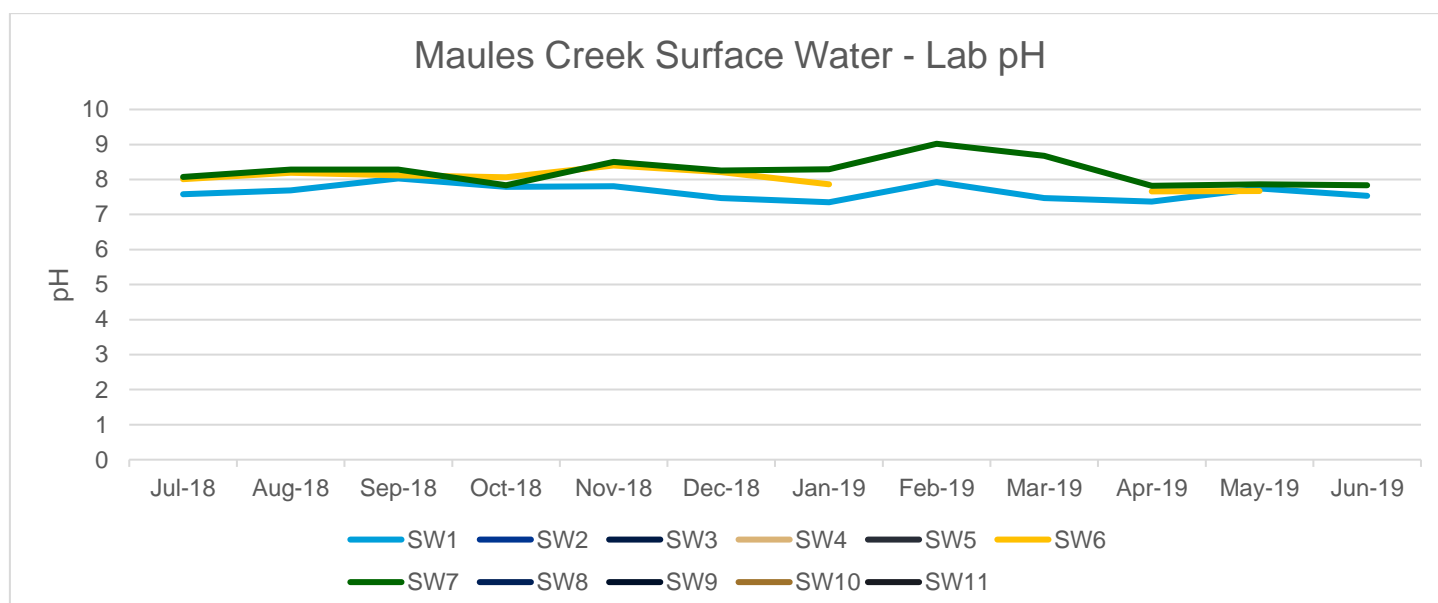
Between 1st April and 31st July 2019, Maules Creek Coal AWS recorded 65.2 mm of rainfall, bringing the total yearly rainfall to 195 mm of rain. There was one rainfall event that exceeded the 38.4mm value over a consecutive 5 day period during May. This resulted in a wet weather discharge from SD9. Monitoring undertaken at the time showed compliance with the EPL conditions. *Note: As per wording of condition L2.5 of EPL20221, 38.4mm equates to the 5 day 90 percentile rainfall for the Gunnedah region.*

Surface Water – Creeks and Rivers

Routine surface water monitoring is conducted in surrounding creeks and rivers on a monthly basis. Results for parameters including pH, EC and Total Suspended Solids (TSS) are shown in the figures below. There are 11 Surface Water monitoring points, however due to the current drought only three were able to be sampled during the twelve month period.

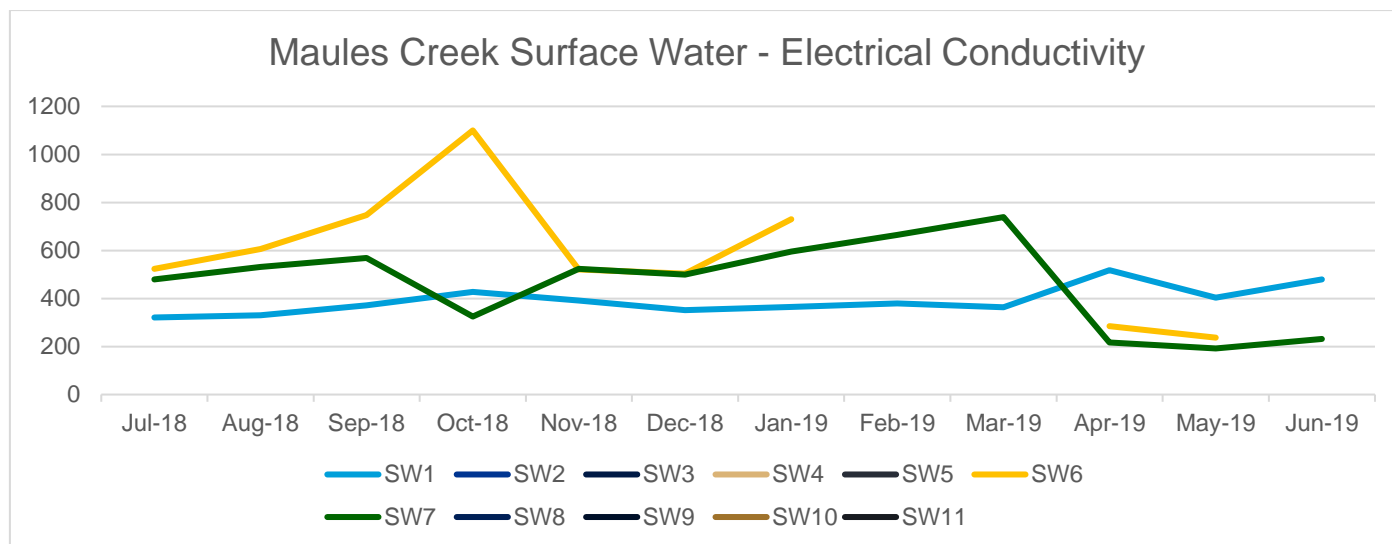
Acidity / Alkalinity (pH)

Monitoring results for pH in creeks and rivers surrounding MCCM are all trending within the ANZECC range for Irrigation, Ecosystem Health and Recreation.



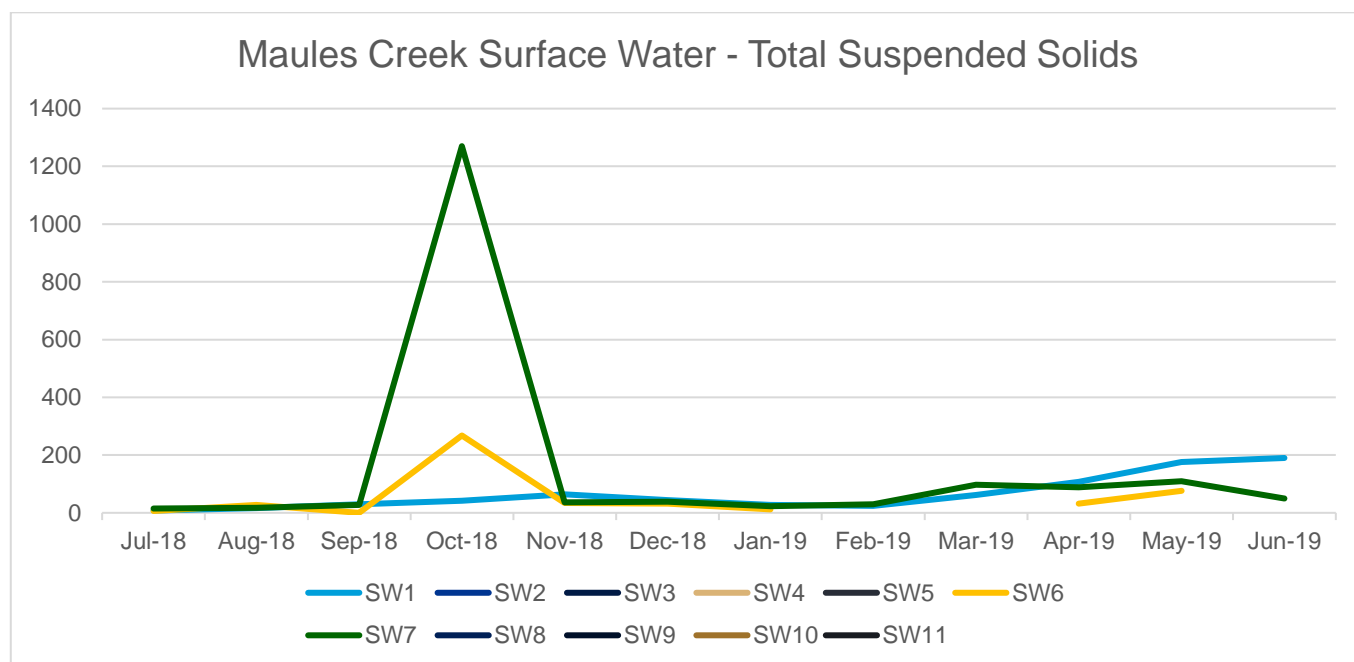
Electrical Conductivity

Surface water EC trends have remained consistent with SW5, SW6, SW7 and SW8 all historically variable. SW5, SW6, SW7 and SW8 are points along the Namoi River which are subject to regulated and variable flow regimes.



Total Suspended Solids (TSS)

Surface water TSS trends have remained generally consistent with historical results. SW5, SW6, SW7 and SW8 are historically variable as they are located along the Namoi River which is subject to regulated and variable flow regimes. There were no elevated levels of TSS in Q2.



Rehabilitation

The rehabilitation phase of bulk shaping of the lower benches on the northern and western out of pit dumps is ongoing. At the end of June 2019 approximately 110 hectares of bulk reshaping had been completed.

Feral Animal Management

During the most recent routine Whitehaven Offset Area Feral Animal Control program (April and June 2019) the results included:

- 29 out of total 41 pigs trapped were from the Maules Creek/Boggabri area; and
- 59 out of total 134 foxes baited were from the Maules Creek/Boggabri area (14% bait take rate).

Weed Management

Broadleaf weed control of Revegetation areas; seasonal Box Thorn spraying and Tiger Pear manual removal (Southern Offsets) has been undertaken otherwise resources have been utilised for tree watering.

Revegetation

Peak Revegetation Period during Autumn through Spring for Maules Offsets targeting:

- 444ha to be seeded with Native Woodland Understorey species mix;
- 1054ha to be planted with Native Woodland Overstorey species.

Ecological Burns and NSW Mining Environmental Excellence Award

- Maules Offsets burns were completed during May 2019 on Olivedene and Bimbooria;
- Whitehaven Maules Wirradale Offset Ecological Burn 2018 was a finalist for the NSW Mining Environmental Excellence Award.

Maules Creek Coal Mine

CCC MEETING

BOGGABRI GOLF CLUB

AUGUST 2019



WHITEHAVEN COAL

Agenda

- Apologies
- Declaration of pecuniary or other interests
- Confirmation of minutes of the previous meetings
- Business arising from the previous minutes
- Correspondence
- Overview of activities
- General Business

Business arising from previous minutes

- Please refer to the previous minutes

Company Report & Overview of Activities

- June 2019 quarter production figure 1.67Mt.
- FY19 production 11.7Mtpa ROM (Run of Mine) coal.
- Safety record of 5.83 (Total Recordable Injury Frequency Rate (TRIFR) - injuries per million hours worked) at end June, which is down from the March figure of 8.84.

Continued focus to improve.



Health and Safety

- Employee health and safety programs continued to focus on:
 - Healthhaven Hub and annual challenge
 - Movement for Improvement – Injury Prevention
 - Ongoing Fitness for Work Promotions including Fatigue Management
 - Annual Skin Checks and Flu Vaccination Program
 - Ongoing Mental Health Awareness and Employee Assistance Program
 - Hygiene Monitoring Program
 - First Aid Training
 - Incident Investigation Training
 - Safety Leadership Induction for New Supervisors
 - Emergency Response Team Training
 - Open Cut Examiner Training
 - Workplace Trainer / Assessor Training
 - Safehaven Conference

Drug and Alcohol Testing Program

- Ongoing Employee Drug and Alcohol testing carried out.
- Our program of testing includes:
 - Random testing (conducted by an independent company)
 - Blanket testing (everyone on site as requested)
 - For Cause testing e.g. after an incident
- All of our Supervisors are trained in drug screening and fitness for work assessment processes.

Employment

- Continued focus on local, indigenous and female employment with ongoing training programs undertaken.
- There have been 21 new trainees employed from April to June.
- 2 of these are new Indigenous trainees

Air quality management

- Publically available results of TEOM1 available on the EPA website. Annual rolling average for TEOM 1 is 18.5 ug/m³ at 30 June 2019 (criteria 30ug/m³).
- Ongoing dust suppressant application across the operation.
- Progressive overburden emplacement and bulk shaping on the northern dump. With some top soil spreading starting to be carried out ~10ha.
- MCC air emissions are lower (over 30%) than those modelled in the Environmental Assessment.

Air Quality Monitoring July 2018 – July 2019

Regional Air Quality PM10 Monitoring Comparison

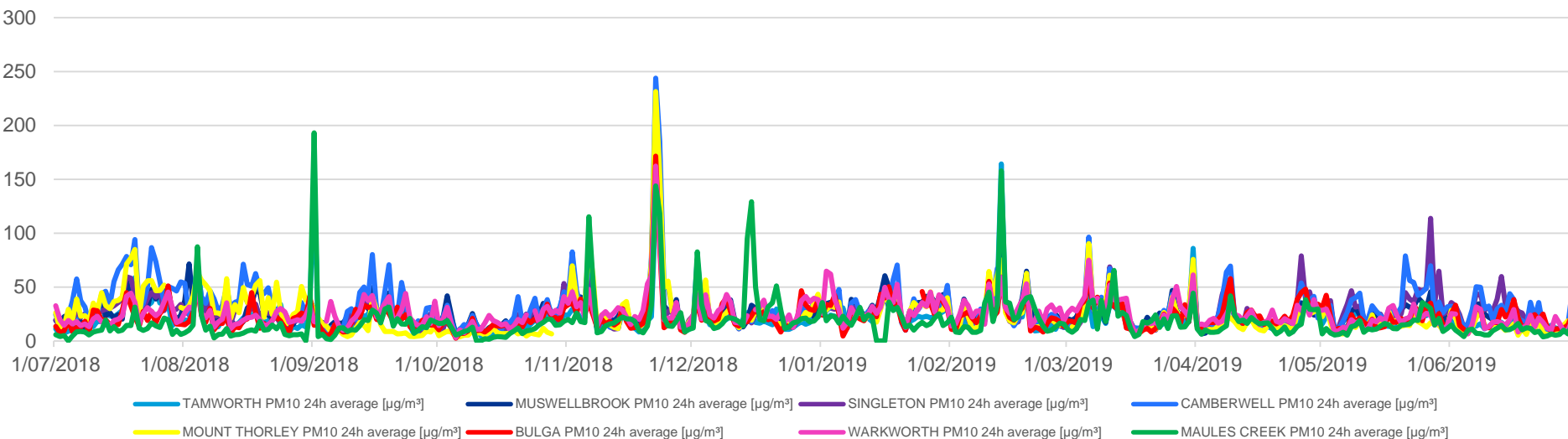
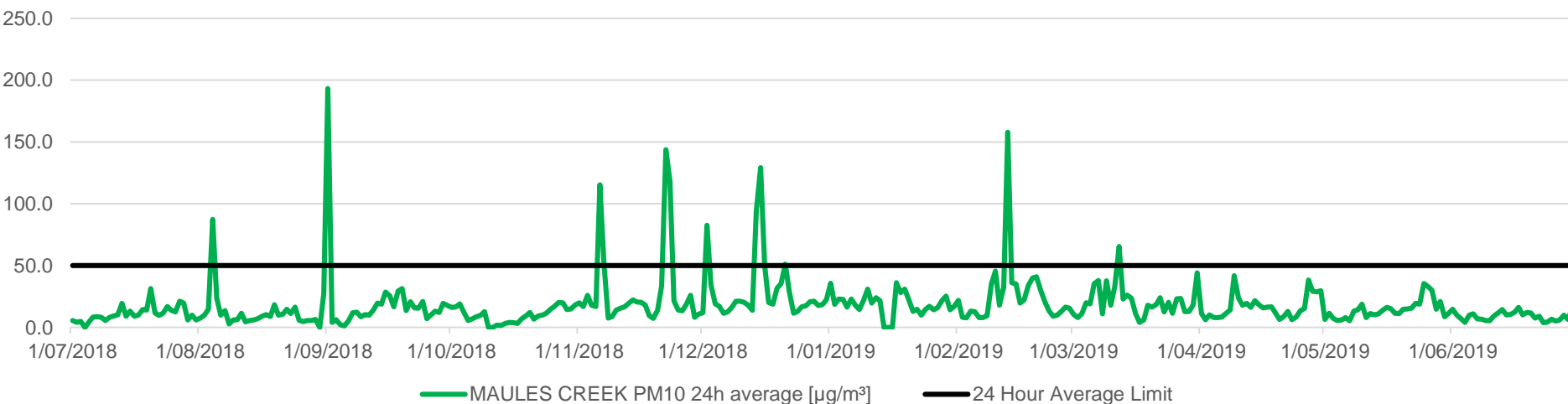


Chart Title



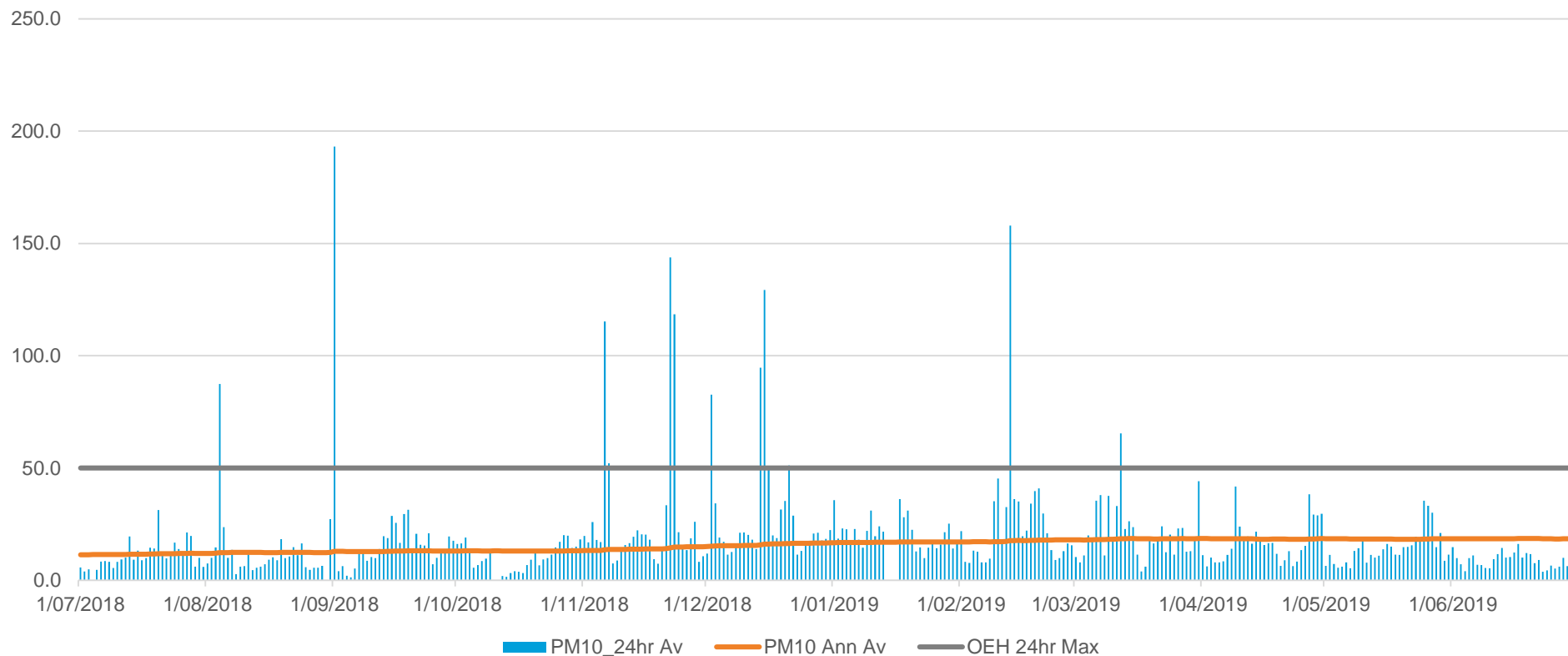
Annual rolling average for TEOM 1 is 18.5 $\mu\text{g}/\text{m}^3$ at 30 April 2019 (criteria 30 $\mu\text{g}/\text{m}^3$). There were no spikes above 50 $\mu\text{g}/\text{m}^3$ during Q2 of 2019.

Monitoring and Environmental Results

- Monitoring and environmental results provided within the distributed information pack

TEOM PM10 Results

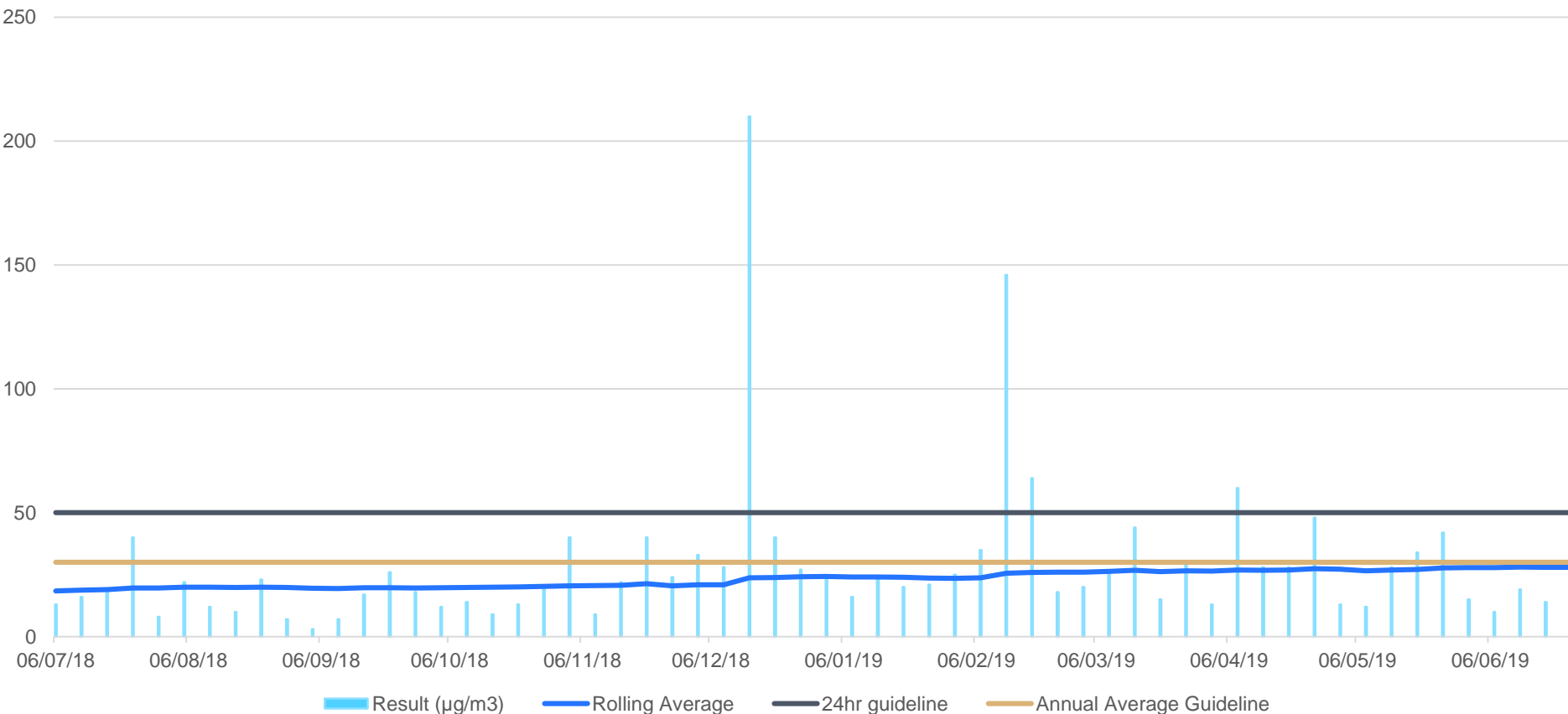
Maules Creek TEOM1 PM₁₀



Regional and local dust events due to drought conditions noted above

High Volume Air Sampling (HVAS)

HVAS - Olivedene



The exceedance recorded on 8 April 2019 was investigated and found to be not mine related

Biodiversity Management

Feral Animal Management

- During the most recent routine Whitehaven Offset Area Feral Animal Control program (April and June 2019) the results included:
 - 29 out of total 41 pigs trapped were from the Maules Creek/Boggabri area; and
 - 59 out of total 134 foxes baited were from the Maules Creek/Boggabri area (14% bait take rate).

Weed Management

- Broadleaf weed control of Revegetation areas; seasonal Box Thorn spraying and Tiger Pear manual removal (Southern Offsets) has been undertaken otherwise resources have been utilised for tree watering.

Revegetation

- Peak Revegetation Period during Autumn through Spring for Maules Offsets targeting:
 - 444ha to be seeded with Native Woodland Understorey species mix;
 - 1054ha to be planted with Native Woodland Overstorey species.

Ecological Burns and NSW Mining Environmental Excellence Award

- Maules Offsets burns were completed during May 2019 on Olivedene and Bimbooria;
- Whitehaven Maules Wirradale Offset Ecological Burn 2018 was a Finalist for the NSW Mining Environmental Excellence Award.

Biodiversity Management

Upcoming works:

- Revegetation Program (Tree Planting) ongoing to finish by September 2019;
- Feral Animal Control in August/September 2019;
- Weed Spraying/Tree Watering ongoing;
- Commence annual Fire Break Track Maintenance Program
- Demolition of remaining Derelict/Obsolete above ground Structures ongoing;
- Annual Flora and Fauna Monitoring from September to November 2019;

Groundwater monitoring



WHITEHAVEN COAL

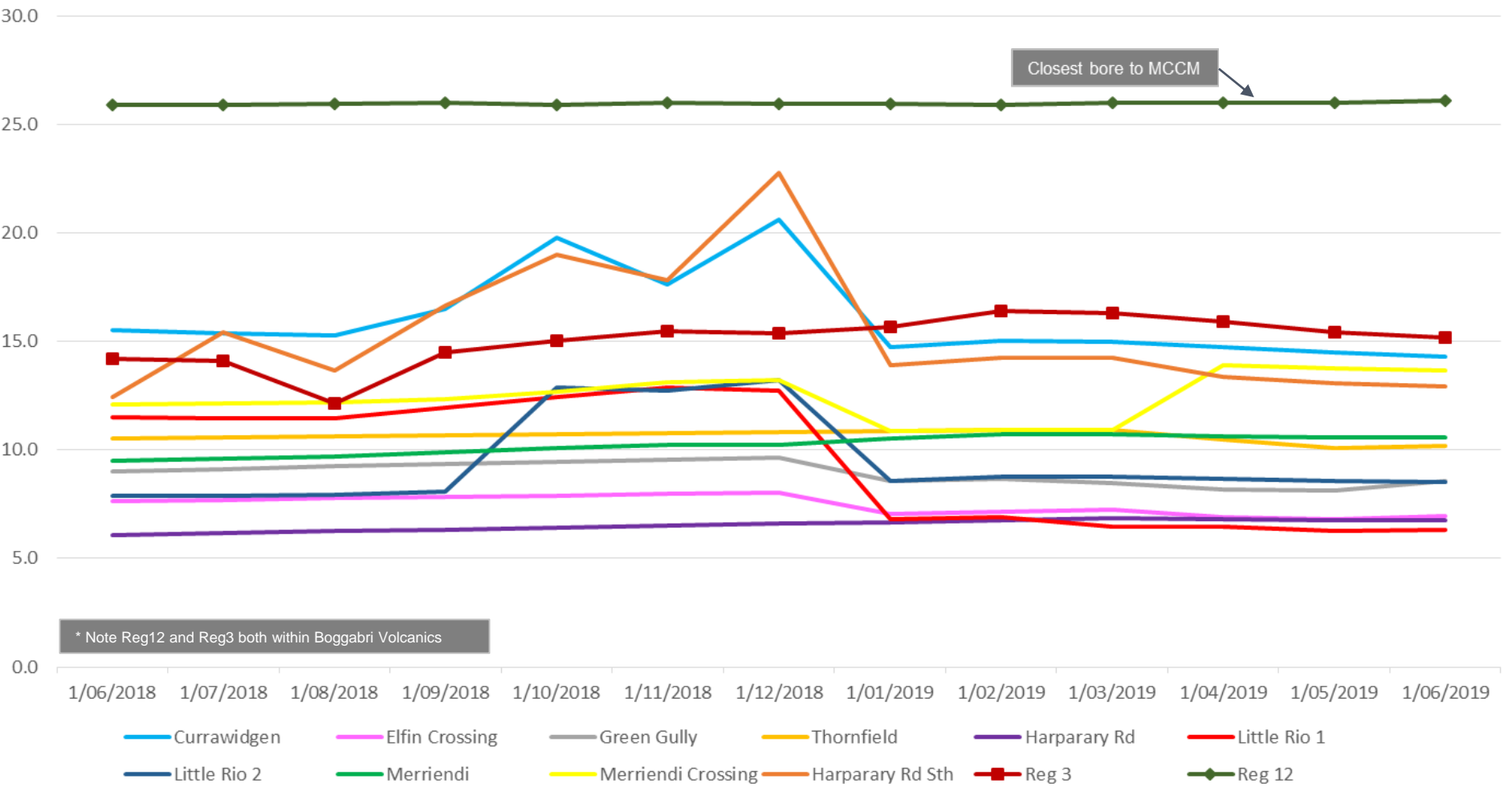
Monitoring Locations



Groundwater levels

195 mm rainfall Jan – July 2019

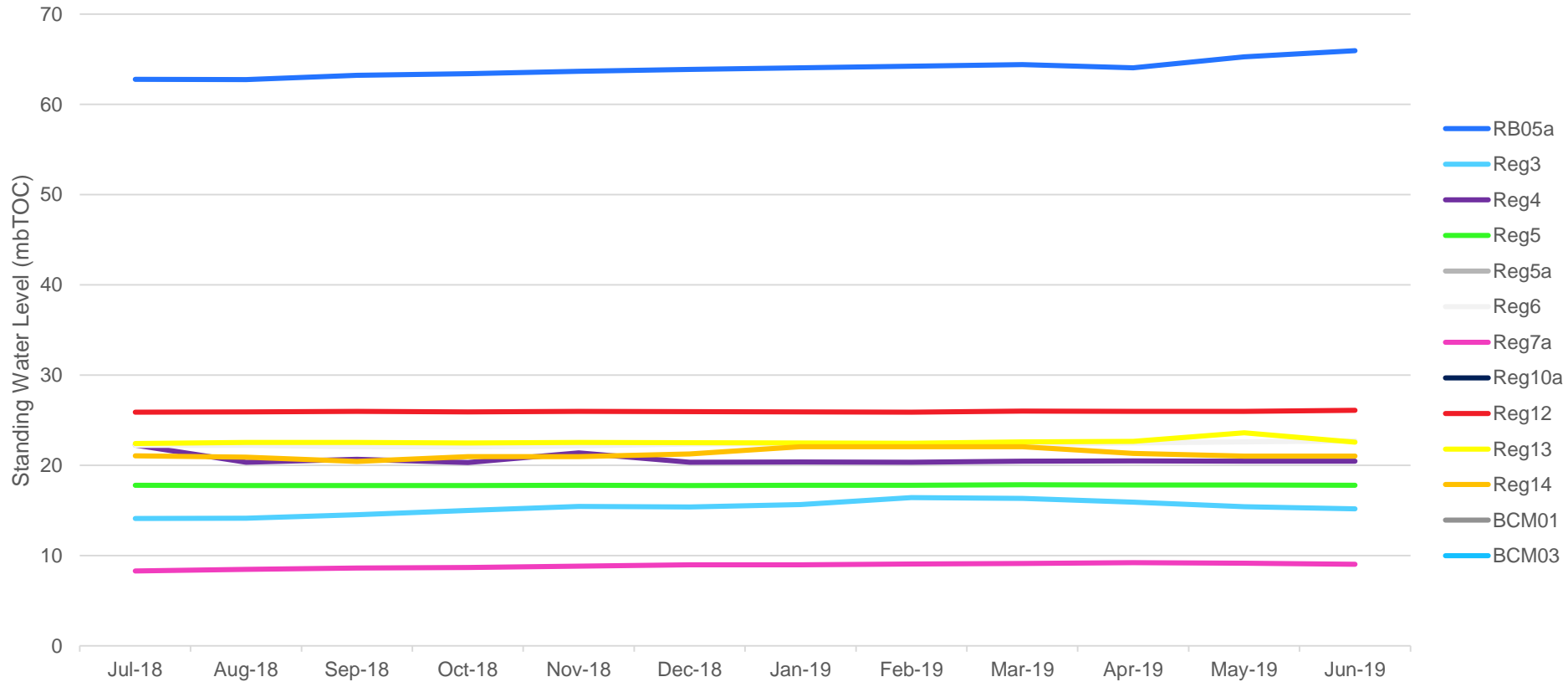
GW SWL Comparison 2018 - 2019



Source: NSW DPI- Water & MCCM monitoring data

Standing water levels

Maules Creek Regional Bores- Monthly Standing Water Levels



Water Management

- Current Project Approvals for each of the BTM sites envisage the potential need for mines to share water / transfer water between sites.
- The BTM Water Management Strategy reflects this potential requirement.
- These safeguards ensure that, during prolonged dry spells or periods of drought, security of supply is maintained and therefore hundreds of jobs continue.
- Water sharing arrangements within the BTM Complex are not new and have been implemented previously.
- Appropriate water licences are held to accommodate volumes being shared and the process of water trading is overseen by WaterNSW.

High Security Water

- 2,250ML High Security (HS) Water Licence held by MCC
- HS water licenses are also held by entities such as sporting clubs, mining companies, construction company, Landholders and Govt entities.

Autonomous Haulage

- Phased introduction of AHS pending evaluation over the next few years
- Supporting employees in affected roles to transition into jobs operating the new technology or be redeployed to Whitehaven's other local mines
- AHS will create new and highly skilled jobs at Maules Creek in haulage systems integration and operation. Recruitment processes will soon be initiated
- Using three trucks we have now performed many cycles and moved over 10,000 tonnes of overburden.
- No work on autonomous drill rigs or excavators being undertaken

Community

- Complaints details – Noted in Environmental Monitoring Report and on the website.
- Supporting the Future EDU program in Narrabri Shire in promotion of STEM.
- Whitehaven are advertising for 2020 Graduate Program.
- Narrabri Business Chamber site visit next week
- Boggabri Business Workshop Group information night

Sponsorships and Donations criteria

- WHC regularly considers requests for donations, sponsorship and gifts in kind, which provide benefit in the following areas:
 - Health, Education, whole of community, representative level Indigenous sport
- Applications which fall outside these charitable areas will not generally be considered for support. Unfortunately, due to the extremely high level of interest, we are unable to support all requests.
- Limitations
 - Funding which may be detrimental to Whitehaven Coal's brand
 - Organisations linked to contentious issues
 - Political organisations or campaigns
 - A direct or indirect competitor to Whitehaven Coal
 - Organisations or activities whose planned activities could be potentially hazardous or illegal
- <http://www.whitehavencoal.com.au/donations-and-sponsorship/>

Voluntary Planning Agreement (VPA) Payments

- MCCM were required to negotiate a VPA with Narrabri Shire Council (NSC) as per Project Approval. Completed in 2014.
- Contributions have been paid to Narrabri Shire Council of;
 - \$13,425,000 paid in lump sum contributions.
 - Ongoing monthly payments \$0.075 per saleable coal tonne + CPI – ongoing.
(FY19 over \$700,000 allocated)

Local spend

- Sponsorships and donations have been made to the:
 - Tamworth and Region for April - June was ~\$6,500
 - Narrabri area community for April – June was ~\$28,000, and
 - Gunnedah area community for April – June ~\$14,500
 - Donations are targeted at Health, Education and Community Enhancement.
- Whitehaven has spent \$1.5 billion in the North West NSW economy since 2013.
- Whitehaven Vendors now have improved payment terms of 21 days.

Next meeting –

November 2019

SR 17 Narrabri 35

17 Maules Ck SR 11 Boggabri 18

THANK YOU

www.whitehavencoal.com.au



WHITEHAVEN COAL